

► 2-Way Ceiling Speakers CSPQ Series

CSPQ 135/2-20

CSPQ 165/2-30

CSPQ 210/2-40

► 2-Way design

20/30/40W 100V

For universal use

Excellent sound quality

Powerful reproduction

Good intelligibility

Easy & quick installation

Quick-push-terminal

Protection fleece
for driver & grille

similar to RAL 9016

CE/RoHs



► UNielectronic

Vertriebs GmbH
Steinbrinksweg 25
31840 Hessisch Oldendorf
Germany

Fon. +49 51 52 - 52522-0

Fax. +49 51 52 - 52522-11

info@unielectronic.com

www.unielectronic.com

2-Way Ceiling Speakers CSPQ Series



The CSPQ 2-way ceiling speaker series can be utilized in many applications and are provided with features that are usually not available in this price range.

The elegant look makes them fit into nearly any environment.

A protection fleece inside the grille does not only prove high attention to detail but also ensures a long term pleasant optical impression.

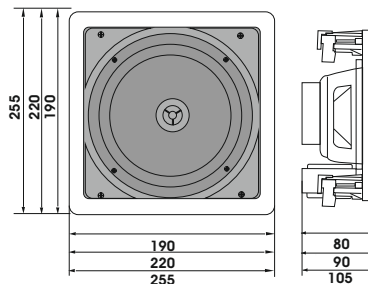
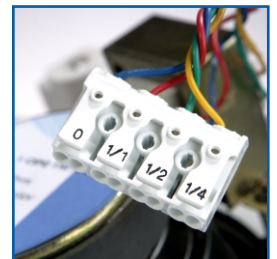
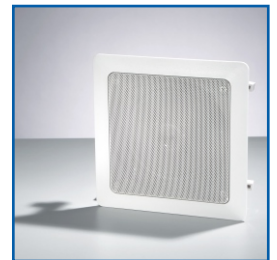
The high quality 2-way driver ensure a very impressive sound quality with excellent intelligibility.

The connection is done with a quick-push-terminal, that does not require any additional tools.

For the protection of the driver the rear openings are covered with a fleece that prevent the intrusion of particles. This way a long term excellent soundquality is guaranteed.

As an option the speakers are available in any RAL colour.

OEM projects welcome.



Specifications	CSPQ 135/2-20	CSPQ 165/2-30	CSPQ 210/2-40
Art.-No.	108233	108238	108243
System	2-way	2-way	2-way
Power Handling	20W/10W/5W	30W/15W/7,5W	40W/20W/10W
Sensitivity 1 W/1m	90 dB	90 dB	90 dB
SPL	103 dB	105 dB	106 dB
Frequency response	100Hz - 20kHz	90Hz - 20kHz	60Hz - 20kHz
Impedance (driver)	8 Ohms	8 Ohms	8 Ohms
Directivity	120°	120°	120°
Connection	Quick-Push-Terminal	Quick-Push-Terminal	Quick-Push-Terminal
Installation height	80 mm	90 mm	105mm
Installation cut-out	160 x 160 mm	190 x 190 mm	225 x 225 mm
Installation	4x quick-mount-clamps		
Color	similar to RAL 9016	similar to RAL 9016	similar to RAL 9016
Weight	1,6 Kg	2 Kg	2,5 Kg