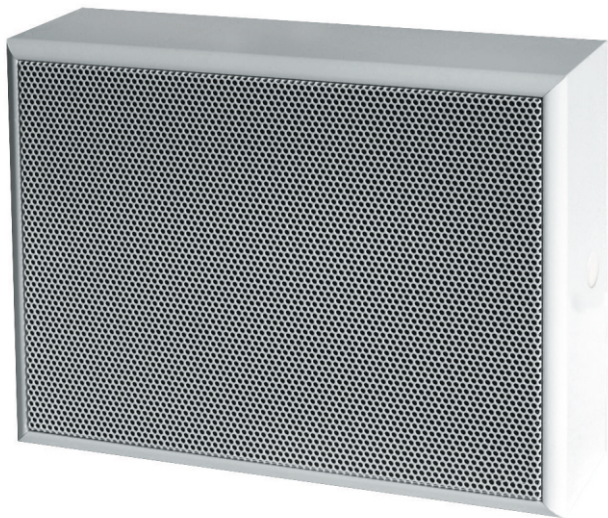



Wall Speaker WSW 165-6 EN54



	EN 54-24:2008 Ref. No.: U05-17 ID-Code: UET-LS02 1438-CPR-0555
Loudspeaker for voice alarm systems for fire detection and fire alarm systems for buildings	
Wall Speaker, 6W, WSW 165-6 EN54, Typ A	
Artikel-No.: 108159	
CE-Symbol according 93/68EWG	

The 6W powered speaker is equipped with a 165mm full-range loudspeaker chassis and a 100V transformer with 3 power adjustments. The high-density, shock-resistant MDF wood housing in white provides a low resonance sound.

A sturdy front grille made of steel guarantees enduring stability. For additional reliability, a 2 pin-ceramic block, a thermal fuse is provided and the speaker chassis is impregnated against wetness.

The speaker is also secured with the high protection class IP 54 against the security risks of environmental influences.

The speaker is also compliant with the British Standard BS 5839, Part 8.

UNielektronic WSW 165-6 EN54

Wall Speaker Art.-No. 108159

Certificate No.: 1438-CPR-0555

EN 54-24 DIN IEC 268-5

Type A - Rated voltage: 100V

Rated voice / noise power: 6W

Tappings: 6W/3W/1,5W



Made in Germany



Wall Speaker WSW 165-6 EN54

Technical Data (Electrical):

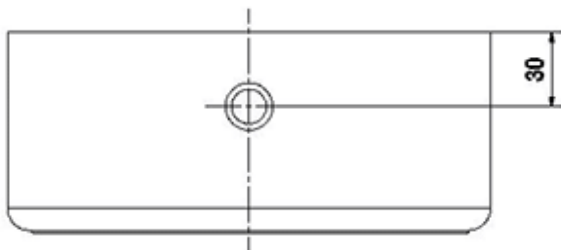
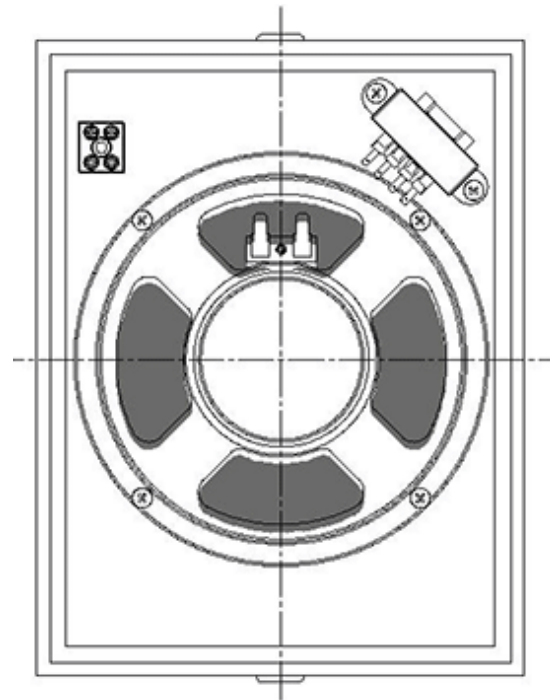
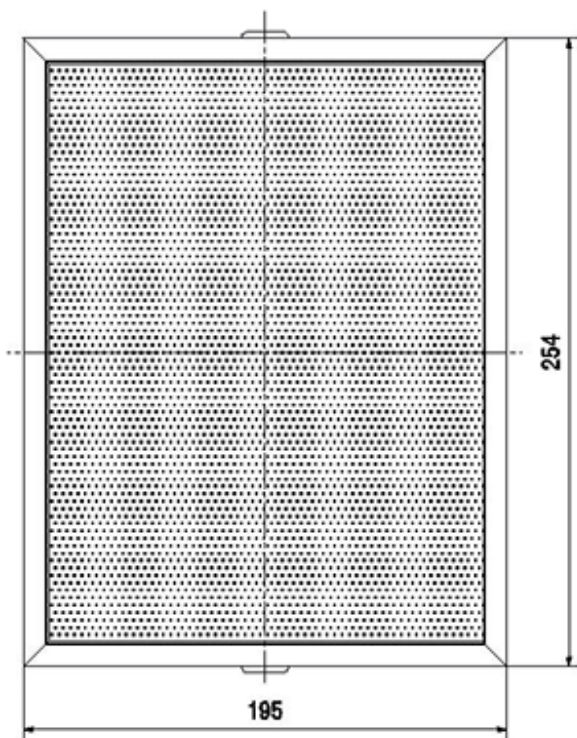
Rated voice / noise power	6/3/1,5 W
Frequency range (-10dB) IEC 268-5	197 - 21.900 Hz
Frequency response	175 - 23.500 Hz
SPL 1W/1m IEC 268-5	100,6 dB
SPL 1W/4m IEC 268-6	86,6 dB
SPL Pmax/4m IEC 268-7	96,3 dB
Sensitify 1W/4m EN54-24	79,5 dB
Dispersionanglel -6dB, 500Hz	180° h/ 180° v
Dispersionanglel -6dB, 1KHz	83° h/ 74° v
Dispersionanglel -6dB, 2KHz	100° h/ 115° v
Dispersionanglel -6dB, 4KHz	55° h/ 53°v

Technical Data (Mechanical):

Dimensions	254x195x81
Weight	1,99 kg
Temperature range	-20/ +80 °C
Mbunting	spring clamp
Connector	2-pin ceramic block
IP Rating	IP54
Maximum cable cross section	8mm ²
Max. cable cross section loop	2x2mm ²
Color	white, similar RAL 9003

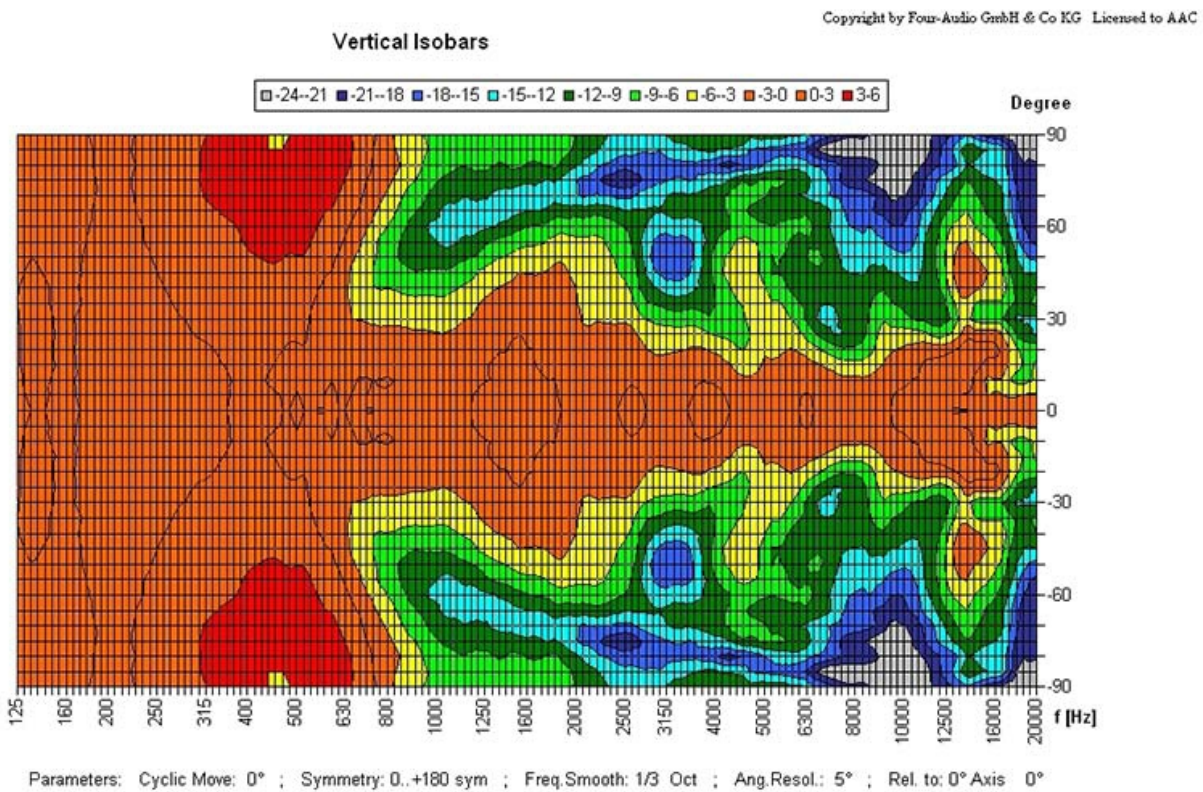
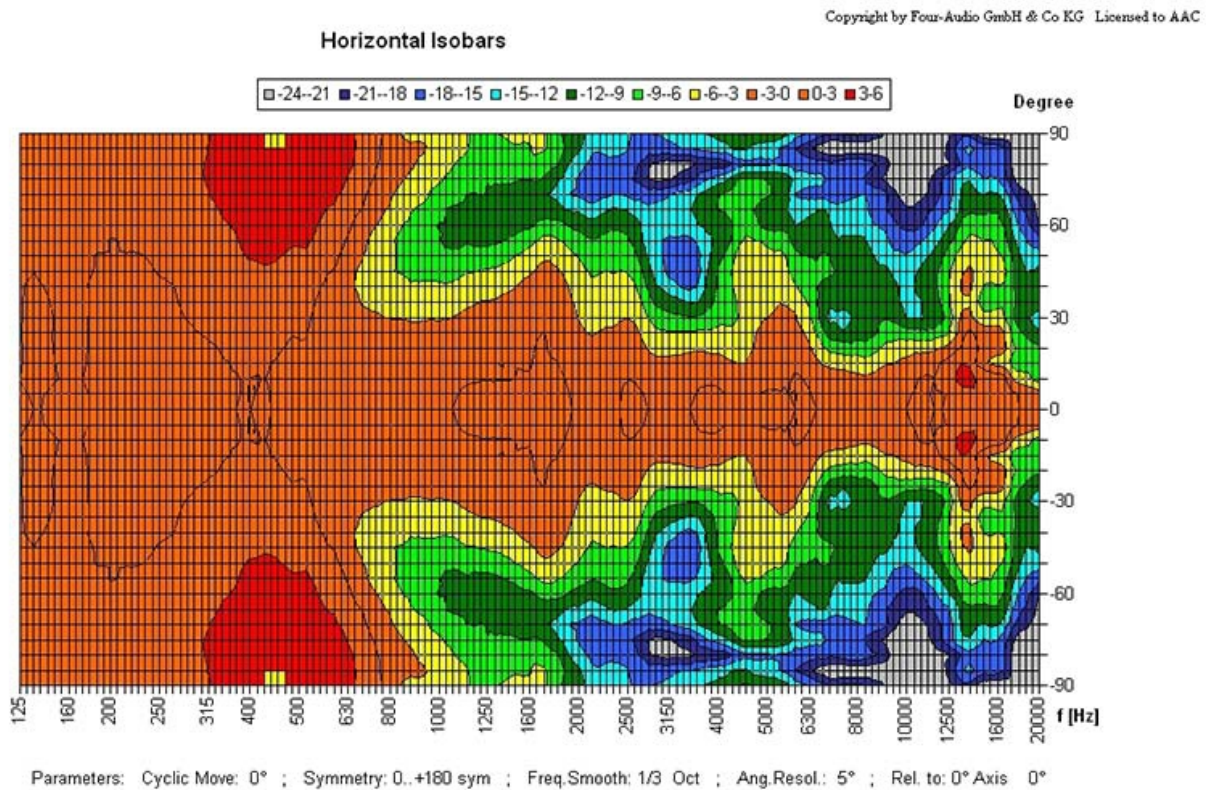
Wall Speaker WSW 165-6 EN54

Technical Diagram:



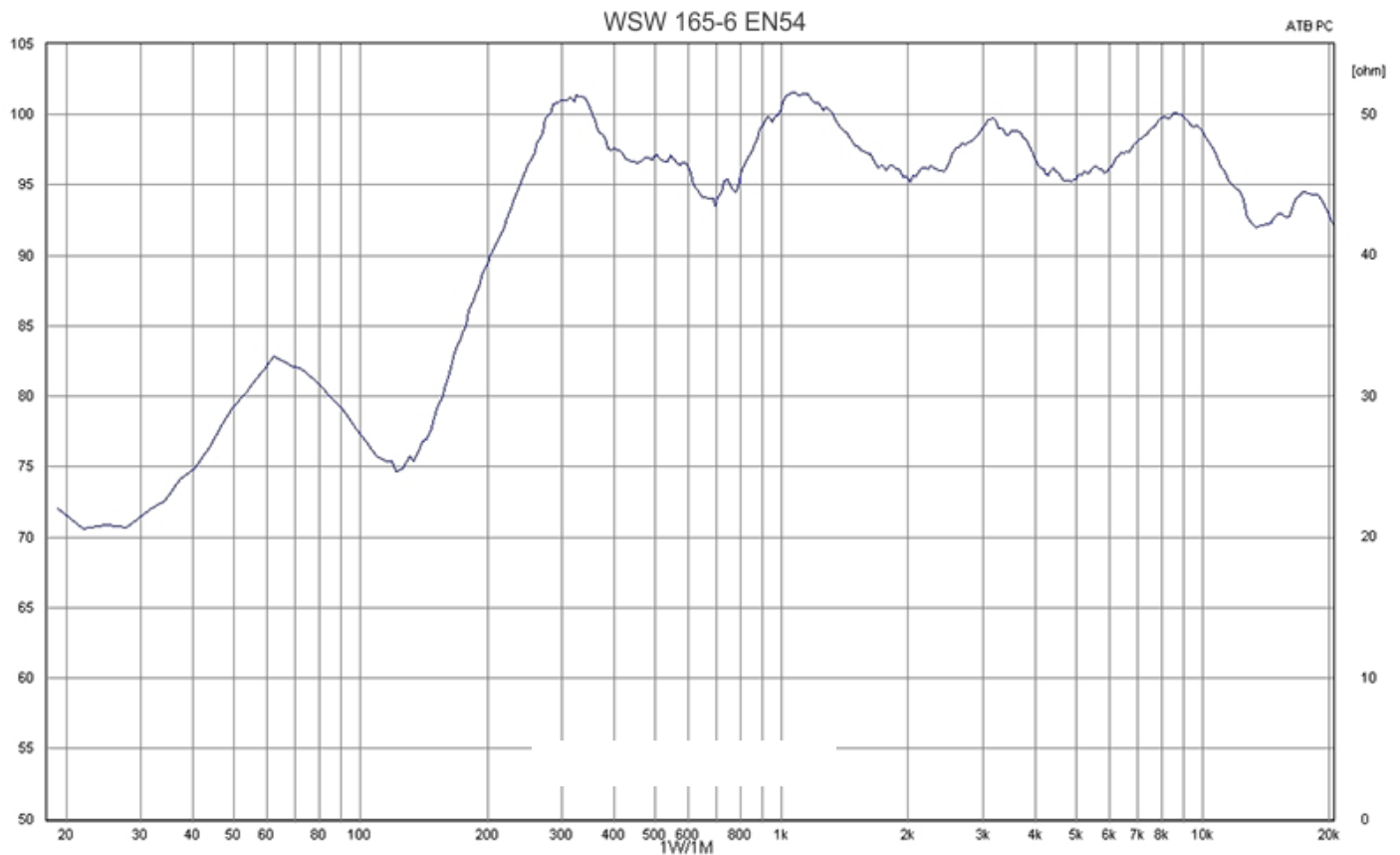
Wall Speaker WSW 165-6 EN54

Polar Diagrams:



Wall Speaker WSW 165-6 EN54

Frequency Response Diagram:



Measurements according to DIN IEC 268-5 | RoHS compliant (2011/65/EU)

Artikel-No.: 108159

Packing Unit: 8

The speaker is also compliant with the British Standard BS 5839, Part 8.